

Incident Command Terminology

Incident Commander - The individual over all incident operations

ICP Incident Command Post - The location where primary functions of command are carried out and usually co-located with the Incident Base. Only one per incident

Incident Base - Location where the primary logistics functions are carried out, only one per incident

Division - Organizational level that is responsible for or assigned to a geographical area

Group - A functional organization level. ie. rescue group, structure protection group

Check-In - Location where resources “sign-in” at an incident so they can be accounted for and used, must sign out when leaving incident

Strike Team - Combinations of the same kind and type of resources, with common communications and a leader. ie. 5 dozers or 4 crews of three person tracking teams or 3 class A pumpers with crew

Task Force - A mixed group of resources such as a 3 person tracking crew and a SAR Dog or a brush truck, helicopter, dozer and 20 man hotshot crew

Span of Control - supervisory ratio, goes from 2:1 (2 team members and 1 supervisor), up to 7:1 (7 firefighters and 1 leader) 5:1 said to be optimum, depends on task at hand

Staging Area - Location where personnel and resources are assigned and can respond or act within 3 minutes (ready to do the task they are assigned)

Helispot - Location, usually temporary, where a helicopter can take-off and land

Helibase - Location for parking, fueling, maintenance, and loading of equipment

Clear Text - ICS uses plain language, no 10-codes are used

Deputy - Acts as an assistant to IC, usually a person representing an agency whose property or jurisdiction is threatened or involved in the incident

Type 1 Search Crew - Team of highly trained searchers skilled in advanced SAR tactics, rope rescue and mountaineering, EMS etc. Type 1 searching is usually approached with more speed gearing towards being a “subject-finder”

Type 2 Search Crew - Skilled and trained searchers used for efficient searching. Medium paced, the type 2 search is more methodical in approach for finding clues. This resource can be also served by persons trained at a type 1 searching level

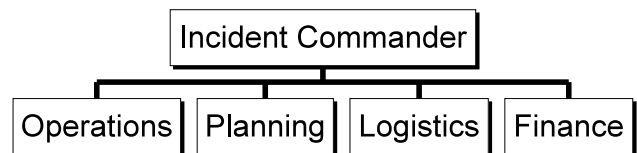
Type 3 Search Crew - Requires persons with less training. Type 3 searching is commonly used for Grid Searching where a line of searchers are used with close spacing and “comb” an area

Various ICS Titles

Incident Commander; Information, Safety, Liaison Officer; Operations, Planning, Logistics, Finance Chief; Division, Group, Air Attack, Air Support Supervisor; Strike Team, Task Force, Medical Unit, Food Unit, Time Unit, Crew Leader; Technical Specialist

ICS Forms

ICS201 - Incident Action Plan
ICS202 - Incident Objectives
ICS203 - Organization Assignment
ICS204 - Crew Assignment
ICS205 - Communications Plan
ICS206 - Medical Plan
ICS207 - Organization Chart
ICS211 - Check-in
ICS214 - Unit Log



Transfer of Command

An Incident Commander is always briefed by the person he/she is replacing. The new IC must know what has happened, what is being done and if there are plans for future actions.

Operational Period

Operational Periods run in 12 hour shifts, usually starting at 06:00am to 18:00 and from 18:00 till 6:00am. If an incident occurred at 22:00 then the time from 10:00 till 06:00 may be called the “Initial Operational Period” then at 06:00, the 1st Operational Period will begin